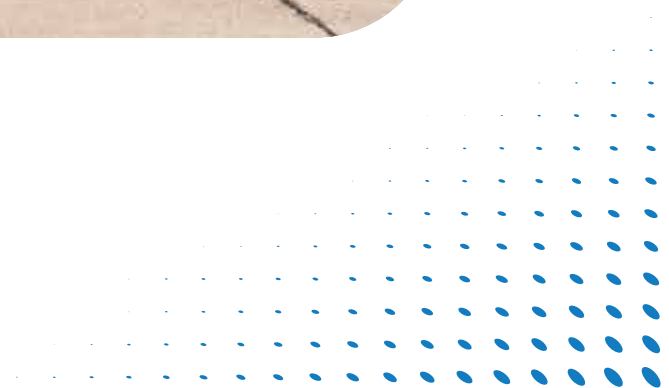


# Transit



*Ford*



# Transit Custom Base

With a rich heritage spanning decades of excellence, the Ford Transit is the epitome of reliability, versatility, and capability, making it a top choice for commercial needs.

The Transit Custom has undergone a comprehensive redesign, focusing on enhancing load-carrying capacity, driver comfort, and overall performance.



# Transit Custom Sport

Adding dynamic flair to the line-up, the Transit Sport has a short wheelbase configuration, racy, eye-catching exterior changes, a unique interior trim, top-notch technology, convenience and safety while retaining Transit Custom's impressive load-carrying capabilities.



# Transit Custom – Van

	Base 2.0L Diesel 6MT 4x2 – LWB Van	Sport 2.0L Diesel 8AT 4x2 SWB Van
<b>Engine</b>		
Engine Type	2.0L Panther	2.0L Panther
Engine Size (cm³)	1996	1996
Maximum Power	100 kW	125kW
Maximum Torque	360 Nm	390Nm
No. of Valves	16	16
Fuel Management System	Direct Cylinder Injection	Direct Cylinder Injection
Cylinders	4	4
Auto Stop/Start	S	S
<b>Transmissions</b>		
6-Speed Manual Transmission	S	-
8-Speed Automatic Transmission	-	S
Driver Modes 3 - (Normal, Eco & Slippery)	-	S
<b>Performance</b>		
Fuel Economy - (l/100 km) Combined Cycle	8.2	8.0
AdBlue Tank (20L)	S	S
Selective Catalytic Reduction - Using AdBlue®3	S	S
CO <sub>2</sub> Emission Combined (g/km)	214	209
Fuel Tank Capacity (L)	55	55
<b>Steering</b>		
Artificial Leather Wrapped Steering Wheel & Gear Knob	S	-
Premium Feel Sensico® Artificial Leather Steering Wheel	-	S
Steering Wheel Manual Adjustment (Reach & Rake)	S	S
Power Assisted Steering	S	S
<b>Driveline</b>		
FWD	S	S
<b>Brakes</b>		
Front Ventilated Discs	308 x 33 mm	308 x 33 mm
Rear Solid Discs	304 x 14.5 mm	304 x 14.5 mm
<b>Chassis and Suspension</b>		
Brake Support Systems: HLA/ESP/TC/ABS	S	S
HLA: Hill Launch Assist	S	S
ESP: Electronic Stability Programme	S	S
TC: Traction Control	S	S
ABS: Anti-Lock Braking Systems	S	S
Steering System	Power Steering	Power Steering
Park Brake	Electronic	Electronic
<b>Wheels</b>		
Wheel Size & Type	16" Steel	17" Multi-Spoke Alloy in Matte Black
Tyre Size	215/65 R16C	215/60 R17
16" Steel Spare Wheel – 215/65 R16C 109/107T	S	S
<b>Dimensions (mm) Exterior</b>		
Vehicle Length (mm)	5450	5050
Overall Width with Mirrors (mm)	2275	2275
Overall Width with Folded Back Mirrors	2148	2148
Overall Width without Mirrors and Handles (Maximum Body Width)	1999	1999
Overall Height	1961	1990
Wheel Base (mm)	3500	3100
Minimum Turning Radius (m)	5.615	5.615
<b>Vehicle Masses (kg)</b>		
Gross Vehicle Mass / GVM (kg)	3025	3025
Gross Combination Mass / GCM (kg)	5025	5525
Gross Axle Mass Front (kg)	1600	1550
Gross Axle unit Mass Rear (kg)	1700	1700
Maximum Payload	1269	1023
Maximum Braked Towing Capacity	2500	2500
<b>Cargo Dimensions (mm)</b>		
Width - Load Space Between Wheel Arches	1392	1392
Height - Load Space Floor to Roof	1433	1427
Height - Rear Loading Height	531 - 585	572
Length - Load Space Maximum (Up to Bulkhead)	2602	2602
Maximum Load Volume (with Bulkhead) (cu.m)	5.8	5.8
Euro Pallet Capacity (1,200mm x 800mm)	3	3
<b>Exterior Styling</b>		
Exterior Lighting - Fixed DSS Hybrid LED Headlights - Daytime Running	S	S
Exterior Lighting - Adaptive Front Lighting System	S	S
Exterior Lighting - Auto Headlamp On/Off	S	S
Exterior Lighting - Halogen Taillamps	S	-
Exterior Lighting - LED Taillamps	-	S
Exterior Door Handles - Colour	Black	Body Colour
Exterior Mirrors - Colour	Black	Body Colour
Front Bumper	Black	Body Colour
Rear Bumper	Black	Body Colour
Grille	Black	Mesh
Mud Flaps	S	-
Sport Body Kit	-	S
Rear Twin Barn Doors with Windows (Wide Opening)	-	S
Power Soft-Close Sliding Side Load Doors	-	S
Integrated & Foldable Roof Racks	-	O
Rear Spoiler	-	S
Stripe Package	-	S
<b>Interior, Seating and Door Trim</b>		
Number of Seats - Individual Bucket Seats	2	2
Cloth Seat Trim	S	-
Fabric Sports Trim with Blue Accent Stripes	-	S
Manual Adjustable Driver's and Passenger's Seat	-	-
Driver 6-Way Power Seat including lumbar	-	S
Manual 4-Way Passenger Seat	-	S
Under Seat Stowage Compartment (Passenger Seat)	-	S
Single Side Load Door - Manual	S	-
Dual Side Load Door - Power	-	S
Close Assist Side Door Load	S	-
Soft-Close Sliding Side Load Doors	-	S
Load Area Protection Kit	S	S

	Base 2.0L Diesel 6MT 4x2 – Van	Sport 2.0L Diesel 8AT 4x2 SWB Van
<b>Interior, Seating and Door Trim Continued</b>		
Floor Covering	Rubber	Rubber
Driver Arm Rest	S	S
Driver and Passenger (Outboard) Heated Front Seats	-	S
Driver & Passengers Seat Occupancy Recognition	S	S
<b>Comfort and Convenience</b>		
Automatic Dual Zone Air Conditioner	O	S
Automatic Rain-Sensing Windshield Wipers	S	S
Auxiliary 12V Power Outlet - Instrument Panel	S	S
Wireless Charging	S	-
USB Plug-Ins - 2	S	S
USB Plug-Ins - 6	-	S
Dual Heated Signal Mirrors - Auto Power Fold	S	S
Power Windows - 1 Touch Up & Down	S	S
Electric Window Defroster	S	S
Quickclear Heated Windscreen	S	S
Illuminated Step - Driver & Passenger	S	S
Driver Footrest	S	S
<b>Audio And Communication</b>		
Vehicle's modem connected to Ford app	S	S
Ford app - featuring Remote Start (AT only), Lock / Unlock, Vehicle Locator, Vehicle Health Alerts, Vehicle Status Oil Life, Enhanced Customer Connectivity Settings	S	S
Digital Instrument Cluster with Configurable Display	8"	8"
Colour Multi-Function Touch Screen Display	13" Screen	13" Screen
Speakers	4	4
AM/FM Stereo Radio	S	S
Bluetooth® with Phone / Audio Streaming	S	S
SYNC®4	S	S
Steering Wheel Audio/Function Control	S	S
Apple CarPlay™ & Android Auto™	S	S
Digital Owner's Manual	S	S
<b>Safety and Security</b>		
Alarm System - Perimetric	S	-
Alarm System - Thatcham Category 1	-	S
Airbags - Front Passenger & Side	S	S
3 Point Lap Sash Seat Belt - All Positions	S	S
Power Door Dead Locks	S	S
Locking Configuration - 2-Step Unlocking	S	S
Roll Over Mitigation	S	S
Immobilizer	S	S
<b>Stowage and Carrying</b>		
Front Door Storage with Bottle Holders	S	S
Cup Holders - 4 (Centre Console, Driver Side and Passenger Side)	S	S
Console-Floor-Full	S	S
Full Width Metal Bulkhead with Window	S	O
Load Area Tie Down Loops	S	S
Locking Glove Box	S	S
Upper Glovebox	S	S
Ultra Bright LED Load Area Compartment Lights	S	S
Ultra Bright LED Load Area Compartment Lights with Light Switch	-	S
<b>Driver Assistance Technologies</b>		
Drive Modes 3 - Normal, Eco & Slippery	S	-
Drive Modes 5 - Normal, Eco, Slippery, Tow/Haul, Sport	-	S
Tyre Pressure Monitoring System	S	S
<b>Driver Assistance Pack #2</b>		
Collision Mitigation System		
Intelligent Speed Assistance		
Speed Control		
Driver Impairment Monitor		
Lane Keeping Aid	S	S
Speed Sign Recognition		
Reverse Parking Aid		
Front Parking Aid		
Rear View Camera - Digital		
<b>Driver Assistance Pack #5</b>		
Exterior Mirror - Power Adjustable & Fold with Blind Spot Magnified View		
Collision Mitigation System - Advanced		
Dynamic Stability Control (DSC) incorporating ABS		
Intelligent Adaptive Cruise Control		
Blind Spot Monitoring & Trailer Assist	-	S
Lane Keeping Aid with Lane Centre Assist		
Pre-Collision Assist with Autonomous Emergency Braking (AEB) and Intersection Assist		
Reverse Brake Assist		
Rear View Camera - Fixed		
<b>Towing</b>		
Maximum Braked Towing Capacity (kg)	2500	2500
Trailer Tow Electrics	S	-
Trailer Light Check	S	-
Recovery Hooks	S	S
<b>Paint Colours</b>		
Frozen White	S	O
Moondust Silver	-	O
Magentic	-	O
Agate Black Metallic	-	O
Blue Metallic	-	O
Grey Matter	-	O
Digital Aqua Blue	-	O
Artisan Red	-	O
<b>Ford Protect</b>		
Service Intervals	15 000 km	15 000 km
Ford Optional Service Plan: 6 year or 90 000km	O	O
<b>Warranty and Roadside Assistance</b>		
Comprehensive warranty	4 years / 120 000km	4 years / 120 000km
Roadside assistance: 4 years / unlimited km	4 years / unlimited km	4 years / unlimited km
Corrosion warranty: 5 years / unlimited km	5 years / unlimited km	5 years / unlimited km

S - Standard Factory Fitment O - Optional Factory Fitment P - Options Contained in Pack

# Transit Panel Van

Versatile, durable and flexible.  
Our customisable Transits Panel  
Vans enable you to tailor your vehicle  
to your unique business needs.  
A seamless blend of advanced  
functionality, style and practicality,  
the Transit Panel Vans range is  
purpose build to get the job done.



# Transit Panel Van

	2.0L TDCi (LWB)	2.0L TDCi (ELWB)
<b>Engine</b>		
Type	Duratorq TDCi 2.0	Duratorq TDCi 2.0
No. of cylinders	4 in line	4 in line
Displacement (cm <sup>3</sup> )	1996	1996
Power (kW @ rpm)	121	121
Torque (Nm @ rpm)	390	390
Fuel requirement	Diesel	Diesel
<b>Transmissions</b>		
Final drive	4,71	4,1
Drive Modes: Normal, Eco, Slippery	-	S
Driver Modes: Normal, Eco, Tow/haul, Slippery	S	-
Type	8-Automatic Speed	6-speed manual
<b>Performance</b>		
Fuel Economy - NEDC $\ell$ /100km (combined cycle) *	7,6	9,3
AdBlue Injector	S	S
CO <sub>2</sub> Emission : Combined [g/km] *	201	244
<b>Suspension</b>		
Front: Independent MacPherson struts, variable-rate coil springs, stabiliser bar and gas pressurised shock absorbers	S	S
Rear suspension: single leaf springs, gas-pressurised shock absorbers	S	S
<b>Steering</b>		
Type: rack-and-pinion steering with rack-mounted power assisted	S	S
Turning circle (kerb-to-kerb) (m)	11,9	13,3
<b>Brakes</b>		
Front ventilated discs	S	S
Rear solid discs	S	S
Emergency brake warning	S	S
Anti-lock Braking System (ABS) with Electronic Brakeforce Distribution (EBD)	S	S
Emergency Brake Assist (EBA)	S	S
<b>Wheels and Tyres</b>		
235/65 R16 – Steel wheel	S	-
195/75 R16 – Steel wheel – (Dual rear wheel)	-	S
Spare wheel – Steel wheel	-	S
<b>Dimensions (mm) Exterior</b>		
Overall length (mm)	5 981	6704–6758
Overall width – with mirrors (mm)	2 059	2 126
Wheel base (mm)	3 750	3 750
Sliding door width (mm)	1 300	1 300
Sliding door aperture height (mm)	1 700	1 600
Rear door width (mm)	1 565	1 565
Rear door aperture height (mm)	1 748	1 987
Front track (mm)	1 732	1 740
Rear track (SRW) (mm)	1 743	2 110
<b>Dimensions (mm) Interior</b>		
Max load length @ floor (no Bulkhead) (mm)	3 200	4 373
Max load length @ floor (with Bulkhead) (mm)	3 044	4 217
Max load length @ 1.2m high (with Bulkhead) (mm)	2 900	4 073
Max load width (mm)	1 784	1 784
Load space between wheel arches (mm)	1 392	1 392
Load floor to roof (mm)	1 886	2 025
Loadspace (max load) (m <sup>3</sup> )	10	15,1
Loadspace (SAE method) (m <sup>3</sup> )	9,1	13,5
Loadspace (VDA method) (m <sup>3</sup> )	10,8	14
<b>Vehicle Masses (kg)</b>		
Gross Vehicle Mass (GVM) (kg)	3 500	4 700
Gross Combined Mass (GCM) (kg)	6 000	7 000
Fuel tank capacity (L)	80	80
Kerb weight (kg)	1 900	2 355
Gross payload (kg)	1 325	2 270
Towing mass (braked) (kg)	2 800	3 500
Towing mass (unbraked) (kg)	750	750
<b>Safety &amp; Security</b>		
Driver airbag	S	S
Electronic Stability Programme (ESP)	S	S
Hill Launch Assist (HLA)	S	S
Traction control	S	S
Rollover Mitigation (ROM)	S	S
Centre high-mounted rear stop lamp	S	S
Power door locks	S	S
Door entry remote	S	S
Rear doors mounted with lock/unlock switch	S	S
Drive-away locking with crash unlocking	S	S
Door auto-relocking enabled	S	S
Two-stage unlocking with configurable unlocking config	S	S
Tyre Pressure Monitoring System	S	S
Alarm & Immobiliser	S	S
<b>Comfort &amp; Convenience</b>		
Radio with single AM/FM antenna, 2 front speakers, 2 tweeters	S	S
USB port, Bluetooth® and Voice Control	S	S
Steering-wheel-mounted audio controls	S	S
Vehicle's modem connected to Ford app	S	S
Ford app – featuring Remote Start (AT only), Lock / Unlock, Vehicle Locator, Vehicle Health Alerts, Vehicle Status Oil Life, Enhanced Customer Connectivity Settings	S	S
Digital Instrument Cluster with Configurable Display	S	S
Colour Multi-Function Touch Screen Display	12" Screen	12" Screen
SYNC™4	S	S
Auxiliary input	S	-
<b>Exterior</b>		
180° opening rear doors	S	S
Headlamps – projector-style halogen reflector lights (quad-beam)	S	S
Manual headlamp levelling	S	S
<b>Interior, Seating &amp; Load Space</b>		
2 x 12V power points	S	S
Cup Holders - 2	S	S

	2.0L TDCi (LWB)	2.0L TDCi (ELWB)
<b>Interior, Seating &amp; Load Space Continued</b>		
Standard cloth seats	S	S
Front driver 3-point seatbelt with pre-tensioners	S	S
Front passenger 3-point seatbelts with load limiter	S	S
Front power windows with driver one-touch up/down functionality	S	S
Manual 2-Way Driver Seat	S	S
Driver Arm Rest	S	S
Partial floor cover – rubber insulated easy-clean (or similar)	S	S
Load space lighting	S	S
Load compartment floor tie-down hooks	10	12
<b>Options</b>		
Trailer tow attachments	O	O
Heavy duty batteries	O	-
Extra heavy duty batteries	-	O
Manual Aircon	O	O
Driver assistance package with 360° view camera	O	S
<b>Ford PROTECT</b>		
Comprehensive warranty: 4years / 120 000 km	S	S
Roadside assistance: 4years / unlimited km	S	S
Corrosion warranty: 5 years / unlimited km	S	S
Service plan	6	6
Service intervals	15 000 km	15 000 km
<b>Paint Colours</b>		
Frozen White	S	S
Moon dust Silver	O	O
<b>Driver Assistance Package with 360-degree Camera</b>		
High-Mounted LED Downlight	O	S
Dual Exterior Power Mirror Power Fold Back	O	S
Collision Mitigation System 3 Level 2	O	S
Adaptive Speed Control	O	S
Blind Spot Information System	O	S
Lane Changing Warning & Aid	O	S
Reverse Parking Aid	O	S
Front Parking Aid	O	S
Parking Slot Aid	O	S
Reverse Brake Assist	O	S
ICE Pack 3	O	S
Front/Side/Rear View Camera	O	S
Front Fog Lamps	O	S
<b>Delivery Assist Package</b>		
Close Assist Side Door	O	-
Kerbside Load Doors	O	-
Keyless Entry/Start	O	-
<b>Marketing Cv Pack #1</b>		
Complete Rear Trim Board	S	S
Single Side Load Door Single Side Load Door	S	S
Kerbside Load Door	S	S
Load Floor Liner-Moulded	S	S
Extended Range Single FU/TNK	S	S

S - Standard Factory Fitment O - Optional Factory Fitment P - Options Contained in Pack

*Ford reserves the right, subject to all applicable laws, to discontinue or change features and other specification either temporarily or permanently without incurring any liability to any prospective purchaser or purchasers. Fuel economy and emission figures obtained from controlled tests on a combined cycle. Note that the actual fuel consumption and emission will depend on many factors including your driving habits, prevailing conditions and your vehicles equipment, condition and use. Consult the vehicle handbook, [www.ford.co.za](http://www.ford.co.za) or your nearest Ford Dealer for more information regarding Ford PROTECT plans and products. Driver-assist features are supplemental and do not replace the driver's attention, judgment and need to control the vehicle. May not operate at certain speeds, or in certain driving, road or weather conditions. Bluetooth® is a registered trademark of Bluetooth SIG, Inc. and is under license. Some phones are not compatible Apple CarPlay, Siri Eyes Free, iPod and iPhone are trademarks of Apple Inc. registered in the US and other countries. Android Auto and Google Maps are trademarks of Google Inc. Warning: Local laws prohibit some phone functions while driving. Check your local road rules before using these functions. Don't drive while distracted. Use voice-operated systems when possible; don't use handheld devices while driving. Some features may be locked out while the vehicle is in gear.*

# Ford Family Promise



The Ford Family Promise offers a streamlined ownership experience that keeps things easy and hassle-free. Exclusively for Ford owners, it includes a suite of upgraded services and options that simplify your ownership experience, providing peace-of-mind and ease wherever you are. We take care of your Ford, so you can take care of life.



## Ford Protect

Ford offers a holistic suite of service, maintenance, extended warranty and roadside assistance products aimed at keeping your Transit in top running condition.



All Ford Transit derivatives recommended Retail Price includes a 6year/90 000km Ford Optional Service Plan. In addition, various extended service and maintenance plans can be purchased directly from the Finance and Insurance Manager at any Ford Authorised dealership. The service plan will cover the scheduled services on your selected plan based on the time, intervals and kilometres. For complete peace-of-mind motoring the Premium Maintenance Plan covers scheduled services, preventative care and replacement of "wear and tear" components as well as mechanical and electrical failure. Terms and Conditions apply.

**Extended Warranty options:** Covering your vehicle for up to 7 years or 200 000kms from the original warranty start date.

**Extended Service Plans options:** Available for up to 8 years or 165 000kms from original warranty start date. (Available from 1 July 2024)

**Extended Maintenance Plans options:** Ford Protect has a variety of maintenance options for up to 7 years or 150 000kms from the original warranty start date.

**Roadside Assistance:** Opt for an additional 1 or 2 years Roadside Assistance.

**Please contact your nearest Ford Dealer for more information regarding Ford Protect plans and products options or visit [www.ford.co.za/owner/ford-protect/](http://www.ford.co.za/owner/ford-protect/)**

Errors and omissions excepted (E&OE). \*\*New Vehicle Limited Warranty.

Ford Credit <sup>1</sup>	Ford Comprehensive	Optional Service Plan <sup>2</sup>	Ford 3-in-1 Premium Maintenance Plan <sup>3</sup>	Ford Protect Plans <sup>3</sup>
Genuine Ford Accessories	Online Service Booking <sup>4</sup>	Express Service <sup>4</sup>	Mobile Servicing <sup>4</sup>	Vehicle Pickup & Delivery <sup>5</sup>
Vehicle Loan Programme	24/7 Roadside Assistance	Service Price Calculator <sup>6</sup>	Genuine Ford and Motorcraft <sup>®</sup> Parts	Two Year Parts Warranty
Affordable Tyre Repair and Replacement	Ford Certified Collision Network	The Ford App <sup>7</sup>	National Dealer Network	

**Disclaimers:**

1. Ford Credit: Subject to credit vetting and approval. FFS Finance South Africa (Pty) Ltd, trading as Ford Credit, is an Authorised Financial Services Provider (FSP 31946) and Registered Credit Provider (NCRCP 72). Offers subject to change without prior notice. Visit [ford.co.za](http://ford.co.za) for further details. 2. Optional Service Plan included as standard on the Ranger, Everest, Territory, Tourneo, Transit, Mustang and excludes Puma and specific Transit derivatives. Jurisdiction and Currency: Your plan is only valid within the territorial limits of South Africa, Botswana, Namibia, and Swaziland. All payments will be made in the currency of South Africa. Your plan will be governed by the laws of the Republic of South Africa whose courts will have jurisdiction in any dispute arising under your plan. Where to go for your Scheduled Services under your Optional Service plan, you must go to a Ford Authorised Dealer. 3. Ford Protect: Ford Motor Company of Southern Africa (Manufacturing) (Pty)Ltd is a registered financial service provider, FSP No. 48173. Repairs and Maintenance Service are made with Authorised New or Remanufactured Parts: All repairs and covered maintenance services will be made with authorised new or remanufactured parts or other products authorised by Ford Motor Company. \*Repairs and Maintenance are done with Authorised New or Remanufactured Parts: All repairs and covered maintenance will be done with authorised new or remanufactured parts or other products authorised by Ford Motor Company. \*\*Depending on your selected Ford Protect Plan, you can enjoy coverage for scheduled services, maintenance, or mechanical and electrical components – or choose the comprehensive 3-in-1 cover for all round protection. 4. Online Service Booking, Express Service, Vehicle Loan Programme, Mobile Service - Available at selected Ford dealerships only. 5. Ford Vehicle Pickup & Delivery is offered by participating dealers and may be limited based on availability, distance, or other dealer-specific criteria. A non-operational vehicle is not eligible and will require roadside assistance. 6. Service Price Calculator is currently applicable to only Ranger, Everest, EcoSport, Fiesta and Figo models. 7. Ford app: The vehicle's modem enables services on selected vehicles. The modem will be enabled at the time of vehicle delivery. The Ford app and the vehicle's modem can only work when both are connected to the telecommunications network. Ford cannot guarantee the Ford app will always be fully operational, and the app may be unavailable, or services interrupted. Ford is not responsible for any limitations of the telecommunications network or your mobile device. Use of the Ford app is subject to the Ford app Terms and Privacy Policy available on <https://www.ford.co.za/fordapp/> and requires mobile device, internet access and software (including software updates from time to time).

## Contact us

If you have any questions or concerns, please contact our Customer Relationship Centre on Tel : 0860 011 022 or email [fordcrc2@ford.com](mailto:fordcrc2@ford.com)

## Running a fleet?

Our Ford Fleet team is here to assist you in any way we can. Please email [fleetsa@ford.com](mailto:fleetsa@ford.com)

The information contained in this brochure is an overview intended for awareness purposes only. Visuals may show specifications, accessories and/or options that may appear different to actual items.

All information, specifications and illustrations are based on the latest product information available at the time of publication.

FMCSA reserves the right to make changes at any time, without notice, to the colours, material, equipment, specifications and models, and is not responsible for typographical errors.

Such changes may affect vehicle pricing and vehicle content.

Discover more at [ford.co.za](http://ford.co.za)



The classic Ford logo, featuring the word "Ford" in a white, stylized script font.