

HONDA
The Power of Dreams

*BUILT FOR
A LIFETIME
OF MEMORIES*



ALL-NEW
CR-V

NAVIGATE

NEW ADVENTURES

The refined sixth-generation Honda CR-V embodies a premium spirit, inviting you to experience adventure with unparalleled luxury and safety.

CONTENTS

- 04 Exterior Design
- 06 Interior Design
- 08 Dashboard
- 10 Safety
- 12 Model Line-up
- 14 Colours
- 16 Specifications & Features





MOTION-INSPIRED

EXTERIOR

The Honda CR-V debuts an all-new rugged and sophisticated design, setting a new standard for aesthetic elegance and functionality. Its sleek roofline, complemented by a long hood, grants it a sportier, upscale profile that's bound to capture attention. The repositioned A-pillars, combined with door-mounted mirrors, not only enhance the car's visual appeal but also significantly improve driver visibility.

Beyond its increased dimensions, being 115mm longer and 10mm wider, the CR-V boasts distinctive and powerful grille designs, crowned with standard LED headlights that exude confidence. This assertive front look is perfectly balanced with signature vertical LED taillights at the rear, further accentuating its modern design language.

The fluid contours of the CR-V were meticulously crafted, optimising performance by directing airflow, thereby enhancing fuel efficiency. The 19-inch wheels reserved for the Exclusive Grade and 18-inch wheels for the Executive Grade add a touch of sophistication, ensuring the car looks as premium as it feels. The streamlined window design guarantees unparalleled visibility, while the newly styled bumpers, with their smooth transitions, underscore the car's sculpted frame, amplifying its dominant presence on the road.



ELEGANT & *SPACIOUS*

The All-New Honda CR-V showcases a sporty, modern, and spacious interior, representing a fresh iteration of Honda's design direction. Crafted with premium materials and upscale touches, this new cabin prioritizes both aesthetics and functionality. The redesigned space boasts more room for passengers, including a 15mm boost in rear seat legroom. The rear seatbacks now offer greater flexibility with eight recline angles, peaking at 10.5-degrees, ensuring a more comfortable experience for passengers. Parents will also appreciate the enhanced ISOFIX anchors, designed for the swift and secure installation of child seats.

Acoustic enhancements make the CR-V notably quieter. This is achieved using sound-absorbing materials in the fenders and floor, spray-type urethane foam for noise insulation, and new isolators that diminish engine noise.

Additionally, the improved Active Noise Control (ANC) system, with a dedicated speaker and broadened volume and frequency coverage, reduces intrusive noises in the cabin.

Visibility has taken a leap forward with repositioned A-pillars, large glass panels, and relocated outside mirrors. The instrument panel is designed for minimal distraction, with reduced reflections and a high-resolution rear-view camera. Touchpoints throughout the cabin use premium materials, with meticulous attention to the operation of controls, the tactile quality of switches, and the visual appeal of design elements like the honeycomb-embossed pattern and the striking honeycomb mesh accent on the dash.



INTERIOR DASH

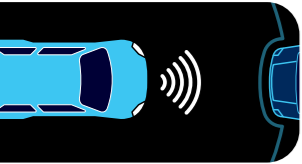
The All-New Honda CR-V cabin showcases advanced technology, with the Exclusive grade featuring a 10.2-inch color TFT display. This display includes a digital tachometer that displays revolutions per minute (RPM), numerical speedometer, and a range of information screens such as a trip computer and safety support. Alerts, including the Honda SENSING® function selection and operating status appear in the centre of the digital display. Advanced features such as a new head-up display is introduced for enhanced driver safety and convenience.

The CR-V is also fitted with a 9-inch touchscreen audio system. This system is user-friendly, boasting physical controls, a faster processor, and fewer embedded menus. It offers wireless compatibility with Apple CarPlay® and Android Auto™, Qi-compatible wireless charging, and user-defined shortcuts. The system also utilizes Smart Shortcuts, predicting user actions for a smoother experience.



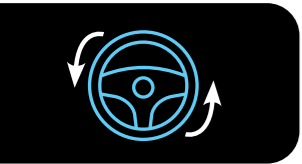
Seamlessly integrated into your field of vision, the head-up display (HUD) projects crisp, clear details directly onto the windshield. This ensures that you can access vital driving information, such as real-time speed monitoring and intuitive turn-by-turn navigation guidance, without taking your eyes off the road. Beyond speed and navigation, the HUD provides a range of essential details like safety warnings and fuel levels. For added convenience, you can effortlessly engage or disengage the HUD with a dedicated button located on the instrument panel.

Honda SENSING



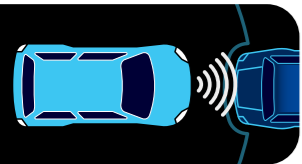
FORWARD COLLISION WARNING

Above 16km/h, this system is designed to trigger alerts if it determines danger of a collision with a vehicle detected ahead



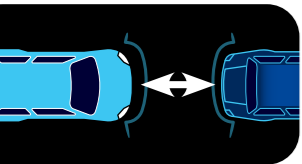
LANE KEEPING ASSIST SYSTEM

Gentle steering corrections are applied when the vehicle drifts from the centre of a detected lane.



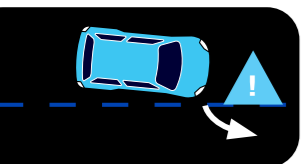
COLLISION MITIGATION BRAKING SYSTEM

Brakes are applied when there's a risk of colliding with a vehicle or person detected in front of you.



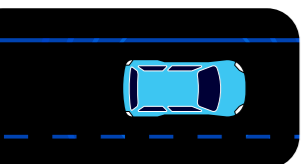
ADAPTIVE CRUISE CONTROL

Your speed and the interval behind a vehicle detected in front of you can be set for highway driving.



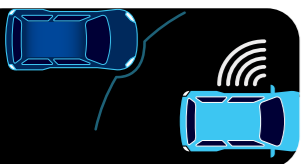
LANE DEPARTURE WARNING

Warnings are provided when the system senses an unintended departure from a detected lane



ROAD DEPARTURE MITIGATION

Steering torque and brakes are applied to assist in keeping the vehicle on the roadway.



LANEWATCH™

Is a camera based system that projects a live feed of the vehicles left-side blind spot on the cars infotainment screen.



GUARDING YOUR SAFETY

The Honda SENSING® system has been enhanced with a new front sensor camera and radar. Additions to this system include Low Speed Braking Control, an updated Adaptive Cruise Control (ACC), Lane Keeping Assist System (LKAS), and new standard front knee airbags.

The Advanced Compatibility Engineering™ (ACE™) has been optimized for oblique collisions, and the next-generation driver and passenger airbags are designed to reduce head rotation in a collision.

Honda SENSING

The new Honda SENSING® suite integrates a front sensor camera with a 90-degree field of view (up from 50 degrees) and a millimeter-wave radar behind the Honda logo on the grille, offering a 120-degree view (up from 50 degrees). These enhancements improve collision prevention, recognising vehicles, pedestrians, road boundaries, cyclists, motorcycles, and extend the CR-V's control at intersections.

MODEL

LINE-UP



1.5T EXECUTIVE CVT

The Executive features include:

- 18" Alloy Wheels
- Tailgate Spoiler
- Electric Hands Free Tailgate with Walk Away Close & Locking
- Privacy Glass
- Roof Rails
- Smart Entry with Walk-Away Auto Locking
- LED Headlights
LED Fog Lights
Auto High Beam
- Premium Eco-friendly Leather Seats
- Electric Seat Adjustment with Heating Function
- 9" Touchscreen Infotainment with Wireless Apple CarPlay® & Android Auto™ Compatibility
- 8 Speaker Premium Sound System
- Wireless Charger
- Active Noise Control
- 7" TFT Display
- I-Dual Zone Climate Control with Rear Ventilation
- 360° View parking Camera with Front & Rear Parking Sensors
- Honda SENSING:
 - Forward Collision Warning
 - Lane Keeping Assist System
 - Collision Mitigation Braking System
 - Adaptive Cruise Control
 - Lane Departure Warning
 - Road Departure Mitigation
 - LaneWatch™
- 8 x SRS Airbag System
 - Front & Side
 - Curtain
 - Front Knee

1.5T EXCLUSIVE CVT

In addition to the Executive, the Exclusive features include:

- 19" Alloy Wheels
- Front & Rear Sport Bumpers
- Dual Tail Pipe Finisher
- Panoramic Sunroof
- Interior Ambient Lighting
- 10.2" TFT Multi-Information Display
- Head-Up Display

COLOUR

OPTIONS

The colour of your car is not only important to you, it is important to us. Platinum White or Canyon River Blue? The decision is yours. With our wide range of colours to choose from, you can find one that suits your style and preferences.



Platinum White Pearl

Lunar Silver Metallic



Coffee Cherry Red Metallic

Meteoroid Grey Metallic



Brilliant Sporty Blue Metallic

Crystal Black Pearl



Canyon River Blue Metallic

SPECIFICATIONS & FEATURES

	1.5T EXECUTIVE CVT	1.5T EXCLUSIVE CVT
ENGINE		
Type	Chain Driven DOHC VTEC Turbo	Chain Driven DOHC VTEC Turbo
Displacement (cm3)	1498	1498
Engine Maximum Power (kW @ r/min)	140 / 6000	140 / 6000
Engine Maximum Torque (Nm @ r/min)	240 / 1700 - 4500	240 / 1700 - 4500
Compression Ratio	10,3	10,3
Bore & Stroke (mm)	73 x 89.5	73 x 89.5
Fuel Consumption - Combined (l/100km)	7,4	7,4
CO2 Emmissions (g/km)	177	177
Fuel Type	Unleaded petrol	Unleaded petrol
Engine Start System	Start / Stop Button	Start / Stop Button
TRANSMISSION & STEERING		
Transmission Type	CVT	CVT
Drive Wheels	Front Wheel Drive	Front Wheel Drive
Steering: - Type	Electric Power Steering	Electric Power Steering
- Tilt / Telescopic Adjustment	•	•
- Turning Radius (m)	6,0	6,0
WHEELS & TYRES		
Wheel Size - Front & Rear	18" X 7.5J	19" X 7.5J
Wheel Colour	Silver Alloy	Black Alloy
Tyre Size - Front & Rear	235/60R18 103H	235/55R19 101Y
Spare Wheel - Wheel Size	235/60R18 103H	235/55R19 101Y
Alloy Wheels	•	•
DIMENSIONS & CAPACITIES		
Length Overall (mm)	4706	4706
Width Overall (mm)	1865	1865
Height Overall (mm)	1680	1680
Wheelbase (mm)	2700	2700
Track / Tread (mm) - Front	1610	1610
- Rear	1627	1627
Ground Clearance (mm)	198	198
Tare Mass (kg)	1698	1747
Max Permissible Weight (MPW) (kg)	2350	2350
Roof Rail Max Permissible Load (kg)	80	80
Towing Mass (Braked) (kg)	800	800
Luggage Space (l) (VDA Method)	150	150
- 3rd Row Seats Down	478	478
Fuel Tank Capacity (l)	57	57
Max. Seating Capacity (Persons)	7	7

	1.5T EXECUTIVE CVT	1.5T EXCLUSIVE CVT
SUSPENSION & BRAKES		
Suspension Type: - Front	McPherson Strut	McPherson Strut
- Rear	Multi-Link	Multi-Link
Electric Parking Brake (EPB)	•	•
Brakes: - Front	Ventilated Disc	Ventilated Disc
- Rear	Solid Disc	Solid Disc
EXTERIOR		
Styling		
Door Handles	Body Coloured	Body Coloured
Shark Fin Roof Antenna	Body Coloured	Body Coloured
Tailgate Spoiler	•	•
Privacy Glass	Rear	Rear
Grille Design	Chrome & Black	Gloss Black
Front & Rear Mud Guards	•	•
Roof Rails	•	•
Front & Rear Sport Bumper	-	•
Dual Tail Pipe Finisher	-	•
Panoramic Sunroof	-	•
Lighting		
Headlight Type (Auto H/L)	LED	LED
Headlight Adjuster	Automatic	Automatic
Front Fog Lights	LED	LED
LED Daytime Running Lights	•	•
Auto High Beam (AHB)	•	•
Front Indicators	LED Sequential	LED Sequential
Tail Light	LED	LED
COMFORT & CONVENIENCE		
Seating & Interior Styling		
Seat Upholstery	Leather	Leather
Front Seat Adjustment: - Driver	8-Way Power Adjustment w/Memory	8-Way Power Adjustment w/Memory
- Passenger	4-Way Power Adjustment	4-Way Power Adjustment
Driver Lumbar Support (4-Way)	•	•
Heated Seats (Front)	•	•
Vehicle Seat Row Configuration	2 / 3 / 2	2 / 3 / 2
Seat Split: - 2nd Row	60:40	60:40
- Slide & Recline Adjustment	•	•
Seat Split: - 3rd Row	50:50	50:50
- Fold-down	•	•
Roof Console with Sunglass Holder	•	•
Armrests - Front	•	•
- Rear	•	•
Steering Wheel & Gear Knob	Leather	Leather
Interior Ambient Light	-	White

SPECIFICATIONS & FEATURES

	1.5T EXECUTIVE CVT	1.5T EXCLUSIVE CVT
COMFORT & CONVENIENCE		
Infotainment & Technology		
Infotainment System	9" Touchscreen HMI	9" Touchscreen HMI
Multi-Information Display	7" TFT	10.2" TFT
Apple CarPlay (Wireless) & Android Auto Compatibility	•	•
Navigation System	•	•
USB Connectivity (Front) (Type-A/C)	x 2	x 2
USB Charger (Rear) (Type-C)	x 2	x 2
Wireless Charger (15W)	•	•
Sound System	8 Speakers	8 Speakers
Active Noise Control	•	•
Instruments & Controls		
Air Conditioning	I-Dual Zone Automatic	I-Dual Zone Automatic
- With Rear Ventilation	•	•
ECON Mode	•	•
Paddle Shift Controls	•	•
Remote Control Engine Starter	•	•
Multi-Functional Steering Wheel	•	•
Heads-Up Display	-	•
Rear View Mirror	Auto Dimming	Auto Dimming
Vanity Mirror (Driver & Passenger)	•	•
Side Mirrors: - Electric	•	•
- Reverse Auto Tilt	•	•
- Side Indicators	LED	LED
Electric Windows: - All Windows	•	•
- with One-Touch Operation	All	All
Automatic Wipers	•	•
Electric Tailgate	•	•
- with Hands Free Assist	•	•
- with Walk Away Close & Locking	•	•
SAFETY		
Active Safety		
Vehicle Stability Assist (VSA)	•	•
Agile Handle Assist (AHA)	•	•
Anti-lock Braking System (ABS)	•	•
Electronic Brake-Force Distribution (EBD)	•	•
Hill Start Assist (HSA)	•	•
Hill Descent Control (HDC)	•	•
Trailer Stability Assist	•	•
Brake Hold	•	•
360° View Parking Camera	•	•
Parking Sensors	Front & Rear	Front & Rear
Driver Attention Monitor	•	•
Tyre Pressure Monitoring System (Indirect)	•	•

	1.5T EXECUTIVE CVT	1.5T EXCLUSIVE CVT
SAFETY		
Passive Safety		
SRS Airbags - Front & Side	•	•
- Side Curtain	•	•
- Driver & Passenger Knee	•	•
Seatbelt Pretensioning System - Front	•	•
3-Point ELR Seat Belts	•	•
Headlight, Parking Brake & Key Reminder	•	•
Seatbelt Reminder - 1st, 2nd, 3rd Row	•	•
ISOFIX Child Seat Anchors - 2nd Row	•	•
Advanced Driver-Assistance Systems (HONDA SENSING®)		
Adaptive Cruise Control	•	•
Collision Mitigation Braking System	•	•
Forward Collision Warning	•	•
Lane Keep Assist System	•	•
Road Departure Mitigation	•	•
Lanewatch Camera	•	•
SECURITY		
Alarm System	•	•
ECU Immobiliser	•	•
Power Door Locking Switch	•	•
Auto Door Locking	•	•
Walk-Away Auto Locking	•	•
Remote Keyless Entry	Smart Entry	Smart Entry
AFTER SALES		
Warranty	5 Year / 200,000 Km	5 Year / 200,000 Km
Service Plan	5 Year / 90,000 Km	5 Year / 90,000 Km
Service Intervals	10,000 Km	10,000 Km
AA Roadside Assist	3 Years	3 Years

HONDA

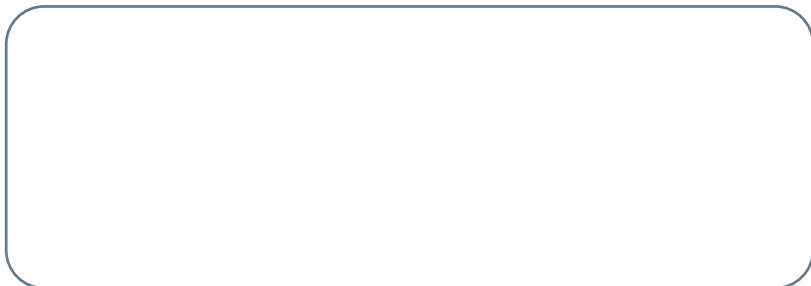
The Power of Dreams



Scan me for more information

Indicated CO₂ and fuel consumption figures quoted are obtained when testing the vehicle in line with the compulsory requirements of SANS 20083 and therefore may not necessarily be achieved under day-to-day driving conditions. Actual fuel consumption figures may be influenced by a range of factors, including but not limited to vehicle maintenance, driving style and behaviour. Fuel consumption may be further affected by the environmental factors and conditions under which the vehicle is operated including altitude, road condition and traffic flow. The figures used in this guide should therefore be treated as indicative only.

Honda Motor Southern Africa (Pty) Ltd. reserves the right to change and modify equipment or specifications at any time without prior notice. The models illustrated in this brochure may show specifications for various markets and not specifically for Southern Africa. They may include optional equipment and accessories not fitted as standard. Subject to error. For precise information, please contact your Honda Dealership. © Honda Motor Southern Africa (Pty) Ltd. Not to be reproduced wholly or in part without written permission from Honda Motor Southern Africa (Pty) Ltd. Warranty and Service details may differ outside of South Africa.



www.honda.co.za

January 2024